

Chain Link Assembly Instructions



Phone: 844-856-1236

937-780-2321

Fax: 877-725-6495

Website: www.midmark.com

E-mail: info@midmark.com

Assembly Instruction Contents

| | |
|---------------------------------|-------|
| Introduction | 1-2 |
| Scale hardware drawings | 3-6 |
| Leg attachment | 7 |
| Panel clamps | 8 |
| Triple clamps | 9 |
| Wall clamps (masonry & regular) | 10 |
| Gate latch adjustment | 11 |
| Kenl-Dor assembly | 12-13 |
| Kenl-Dor Cable Guard | 14 |

Introduction

Thank you very much for your investment in Midmark kennels. All of us at Midmark take great pride in providing our customers with the highest quality animal enclosures combined with an enjoyable ordering experience. Our unique manufacturing process allows Midmark to build custom fit kennels that work better, last longer, and are safer for both the animals and handlers. The following instructions will assist you with proper assembly, cleaning, and maintenance of your Midmark kennels. It is important to follow these guidelines in order to receive the best results and maximum life from your investment.

Assembly

The following pages will show you how to assemble your new Midmark kennel. Be sure to use the enclosed scale drawings of the provided hardware to ensure proper identification and usage. The following bullets provide some general helpful hints to the overall assembly.

- Depending on the configuration of your kennel, it is usually best to begin your assembly at one end of your location. It can become more difficult to access panels as you attach more pieces to the runs.
- Some installations will include special drawings that refer to labeled tags on the panels. Panels may look the same but slight variations in size exist.
- Attach all legs to the base of the panels prior to assembly. See details on page 7.
- Keep all clamps a little loose until all panels are in place, then tighten fully. This will help with the final alignment of the panels and gate units.
- Attach top-covers last, if applicable.

Care & Cleaning

Since kennel owners naturally want their kennels to be clean, disinfected, and odor-free, kennels are subjected to frequent cleanings with a variety of harsh chemicals. Mason kennels are constructed with the highest levels of zinc and other rust protective coatings in order to provide the greatest resistance to premature corrosion.

Care and Cleaning Instructions for your Kennel Enclosures

It is important to understand the following information to prevent any corrosion, pitting, and discoloration on all metals including stainless steel. **Failure to follow this information may void your warranty.**

- Deodorizing agents, disinfectants, and sanitizers should not stand wet on your product for more than just a few minutes. Any use of cleaners containing chlorides, bromides, iodines, and thiocyanates can lead to premature corrosion and discoloration. **Bleach should not be used on any kennel equipment.**
- Rinse off all cleaning agents with clean water. The cleaning agents should not be allowed to evaporate and dry on the surfaces of the metal.
- Urine should be removed rapidly and surfaces should be washed thoroughly.
- Animal hair should not be allowed to collect on the surface of the equipment. The hair can hold urine and other fluids that can be harmful to your kennels.
- Never use ordinary steel wool pads or brushes to clean your kennels. Instead, use only stainless steel or nylon bristle scrubbing tools.
- Cleaning should be done frequently. Daily or weekly cleaning is suggested to maintain the best finish on your equipment.
- We recommend KennelClean™ and KennelShine™ concentrated solutions to best maintain your equipment as well as disinfect and deodorize your animal kennels. These products are available from Mason Company.

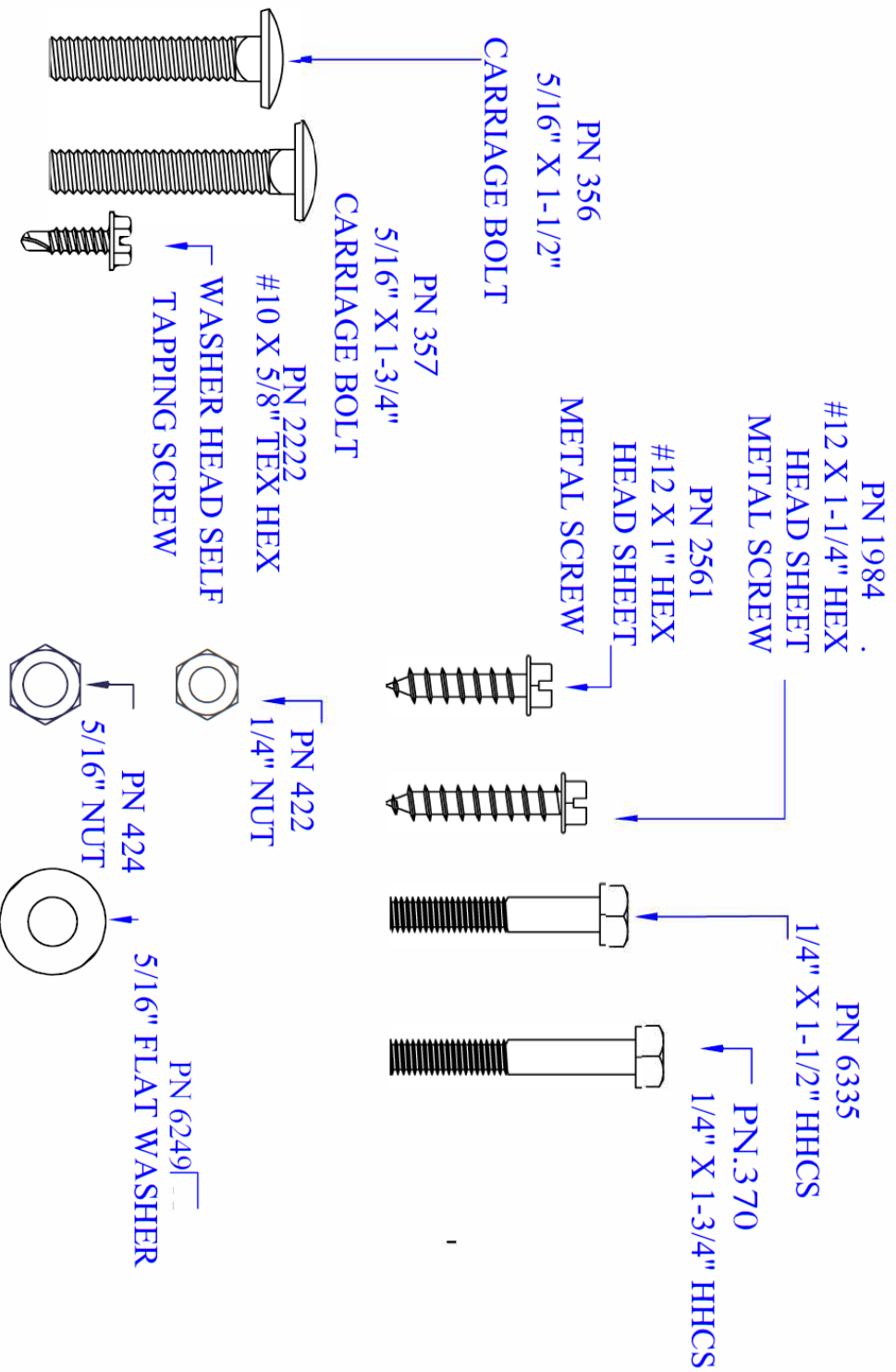
Maintenance

Over time, your Mason kennels might require adjustments, lubrication, or replacement parts in order to remain in top working condition. We recommend a yearly maintenance schedule to lubricate door hinges, adjust gate locks and any other moving parts. A standard, industrial grease works well. If your kennels should need any replacement parts, our professional sales engineers will be happy to review your original order and assist you.

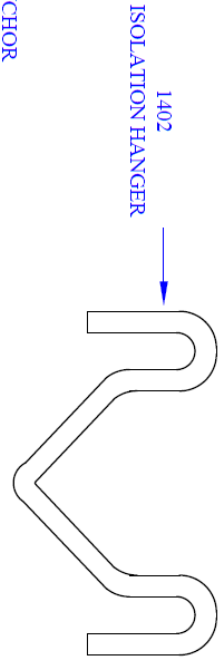
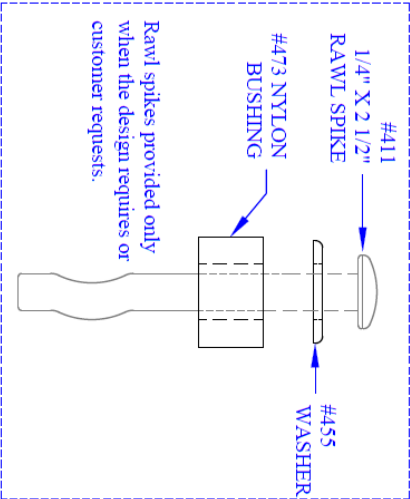
Note: Wall mounting hardware is shown only for reference purposes and is not included!

Scale Drawings of Hardware

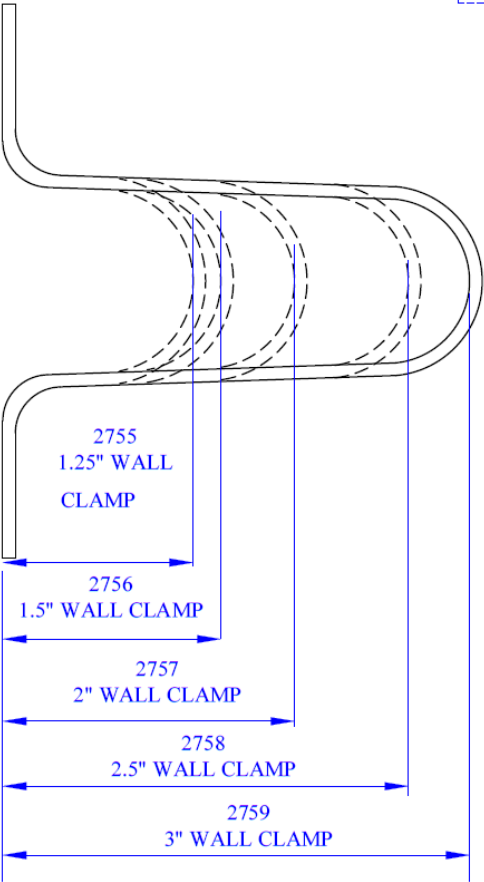
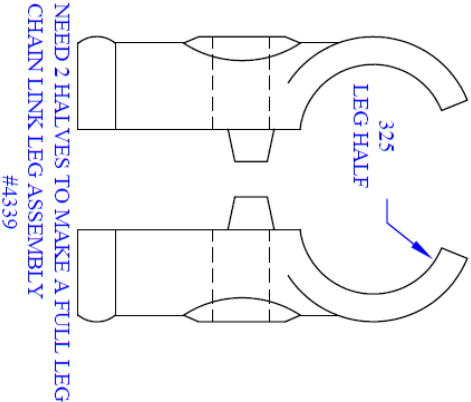
Form #1
Rev P



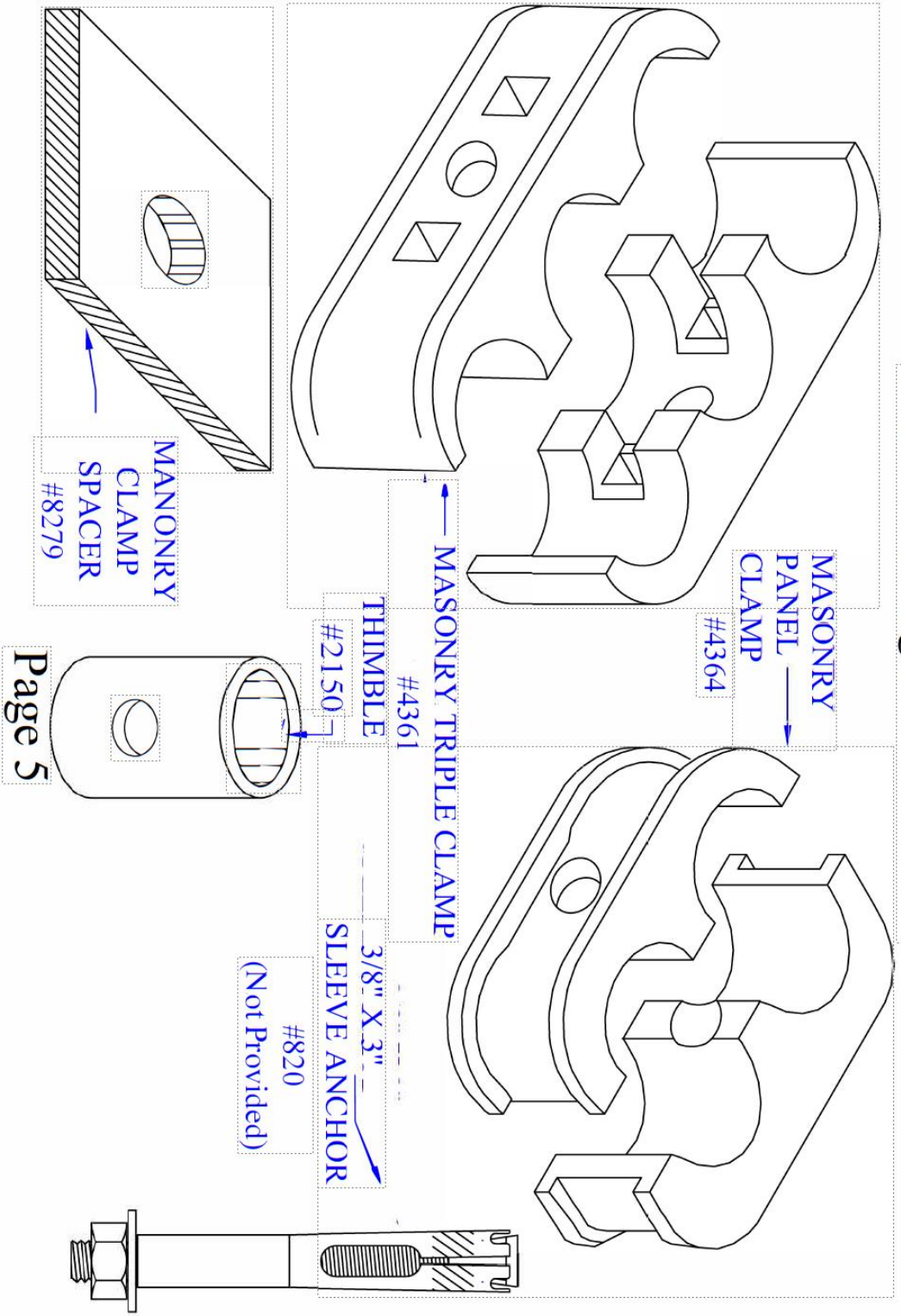
Scale Drawings of Hardware



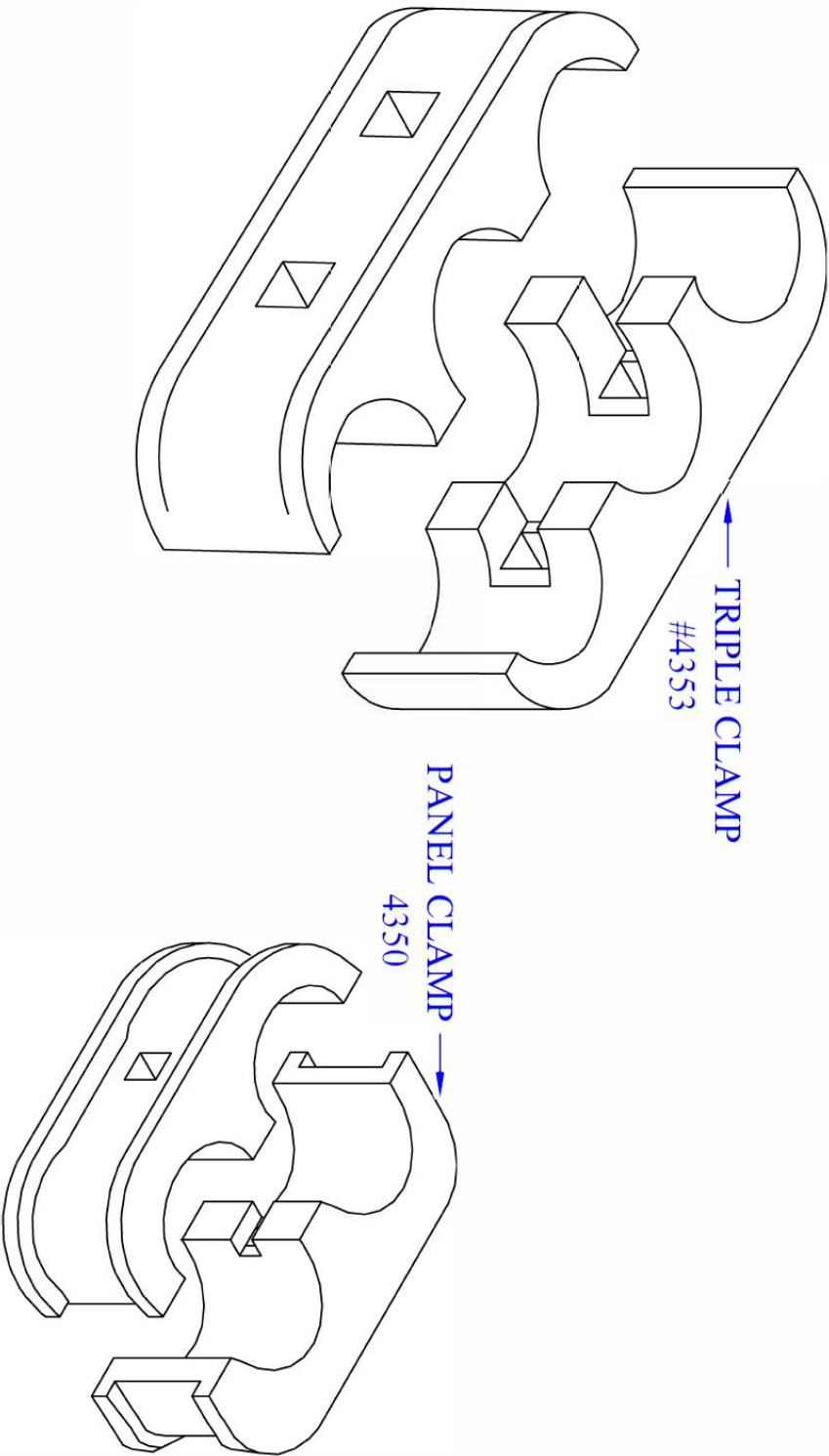
LEG ANCHOR



Scale Drawings of Hardware



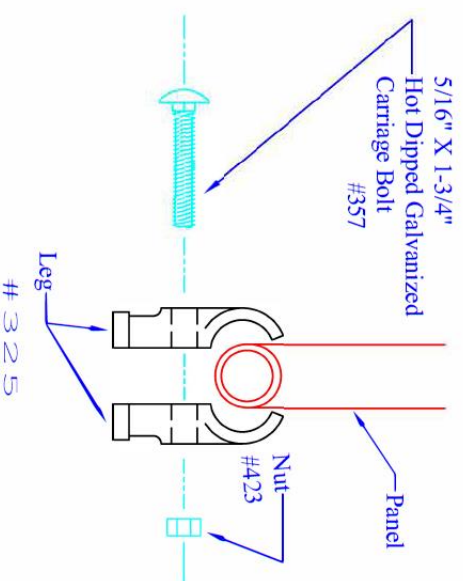
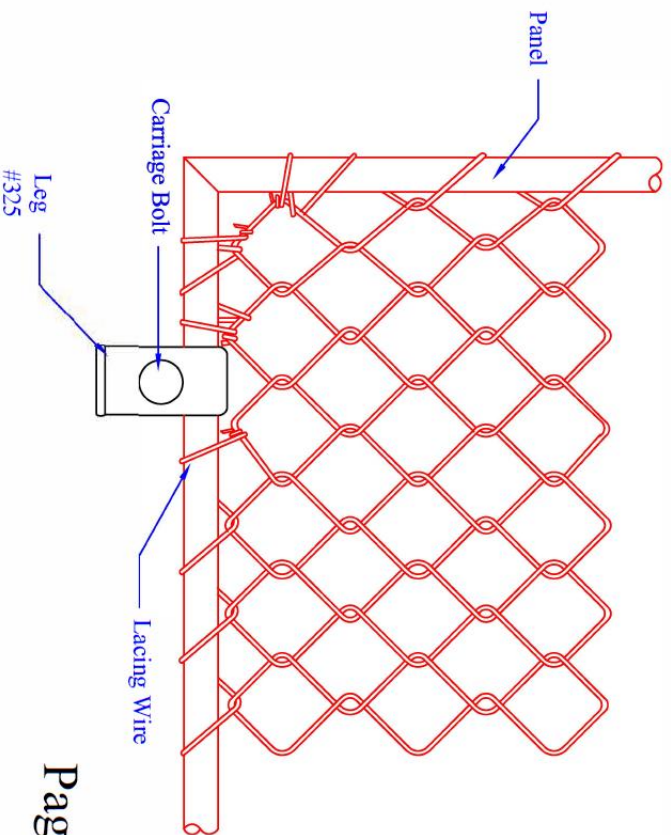
Scale Drawings of Hardware



Leg Attachment

LEGS (Usually required on most side panels)

If you are using legs attach these first BEFORE the panels are set up. The easiest way is to clamp the legs to the top horizontal pipe frame and then turn the panel over. Nuts are always to the outside of the run. Use the 1-3/4" bolts for legs and before you tighten up the nuts, make sure the legs are straight with the panel. In most cases, the lacing wire is spaced so that one leg will fit on the frame a few inches from the end. On the longer (12' and 14') panels where three legs are used, one leg should be placed near the center in the space provided. If for some reason the lacing wire interferes with the placement of a leg, do not clamp leg over the wire. Slip a screwdriver under the wire and pry it up enough to allow the edge of one-half of the leg to slip under the wire. Tap the leg until it seats firmly against the pipe. The other half can then be easily bolted on.

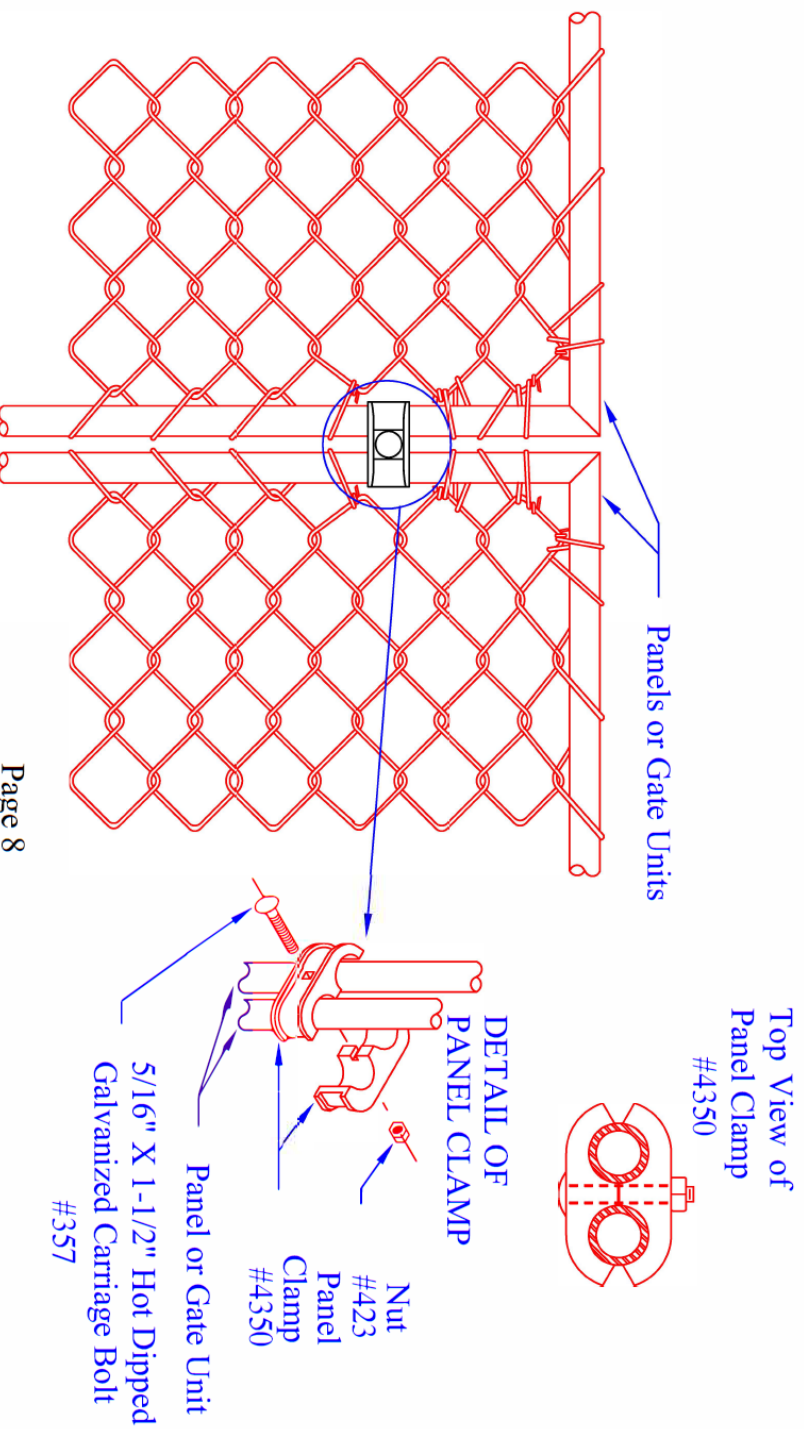


Panel Clamp Attachment

Form #1
Rev P

PANEL CLAMPS

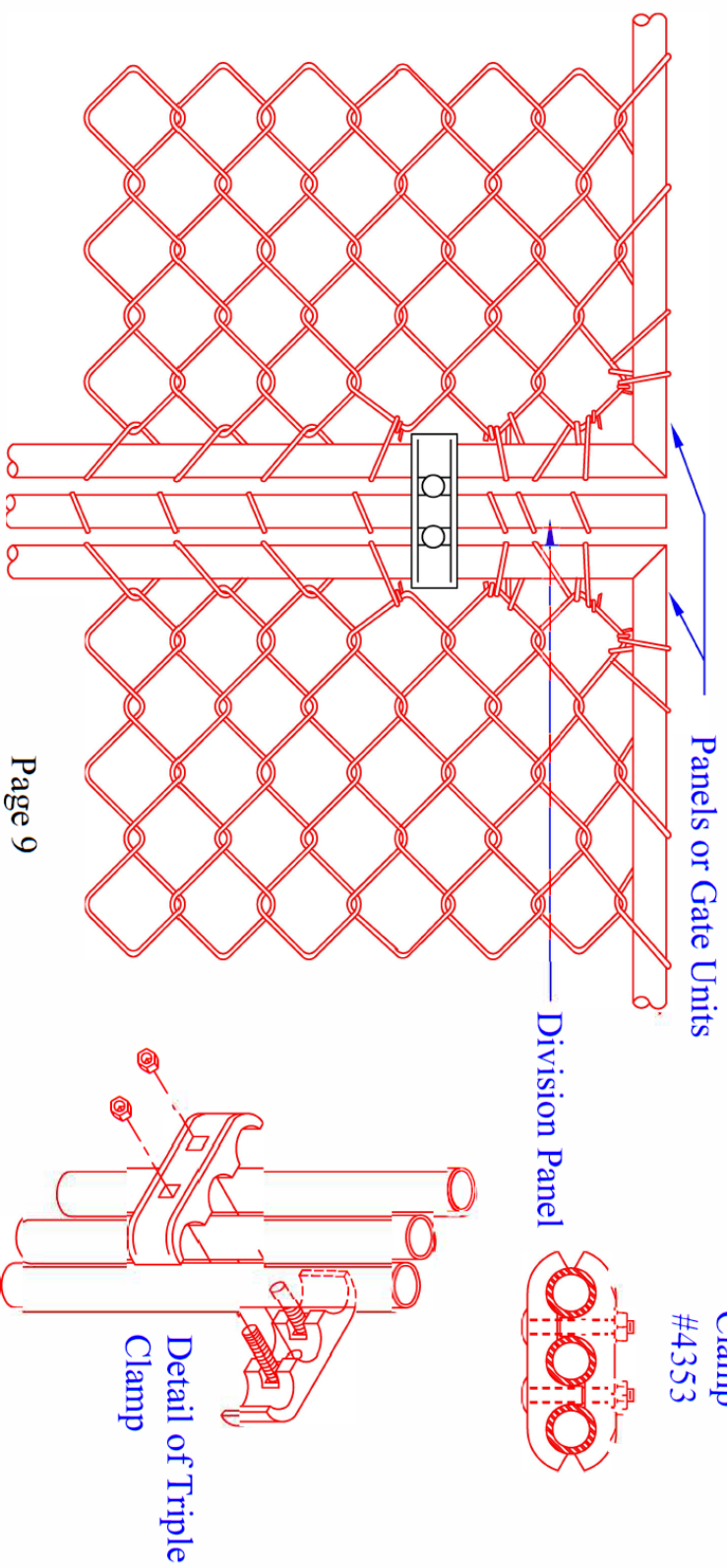
Two of these are used when two panels or a panel and gate unit are joined in a line and also at corners of all rectangular pens and at the outside corners of a series of kennel runs. All panels have open or clear spaces at the top and bottom of the end frames where the clamps are to be placed. Do not clamp over the wire, use the spaces provided. 1-1/2" bolts are furnished for these clamps and the heads of the bolts should be on the inside of pen with nuts on the outside.



Triple Clamp Attachment

TRIPLE CLAMPS

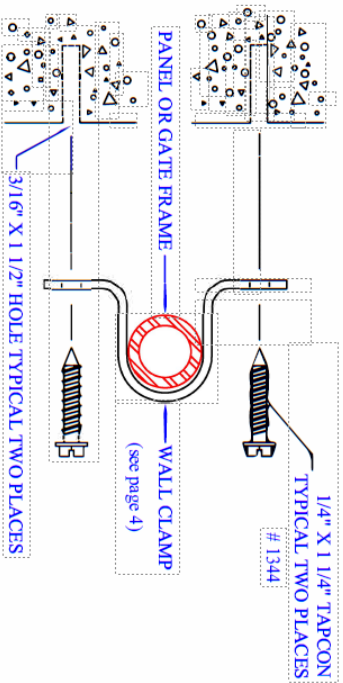
Two of these are used on division panel-gate unit connections in a series of runs and require two 1-1/2" bolts. Do not clamp over the wire, use the open spaces provided.



Wall Clamps Attachment

Form #1
Rev P

WALL CLAMP INSTALLATION FOR MASONRY OR BLOCK WALLS

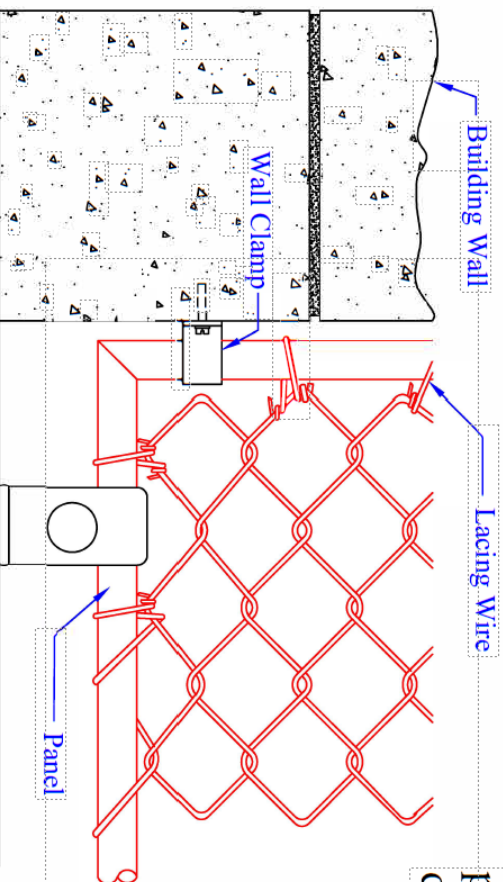


MASONRY

Used for attaching a gate unit or a panel to a wall. Use two per panel in the open spaces at the top and bottom. Drill 3/16" holes in the wall. Secure the clamp to the wall with the Tapcons (Not Supplied).

WOOD

Same as masonry (above) without pre drilling holes . The Tapcons go directly into wall (Not Supplied).

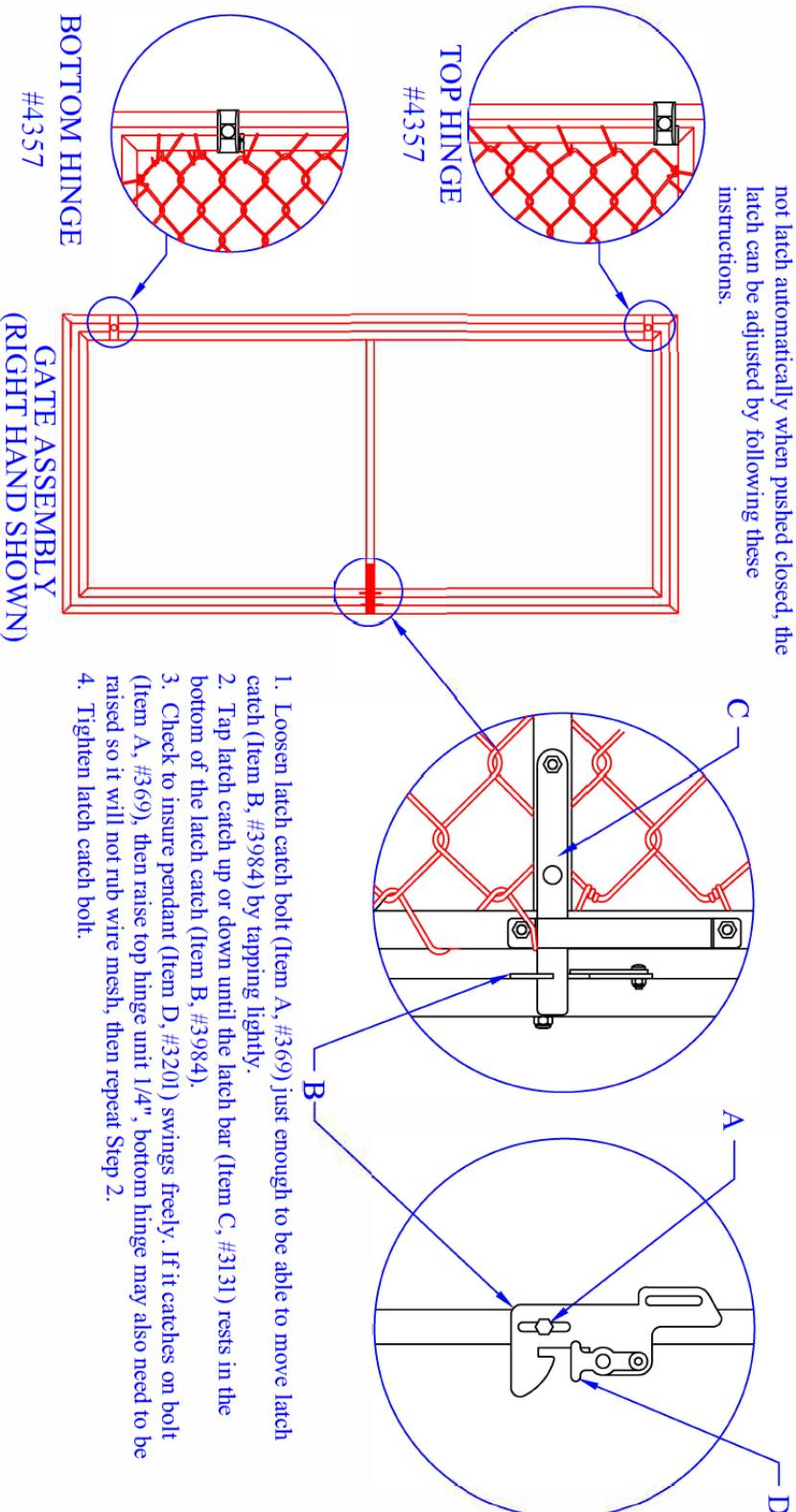


ISOMETRIC VIEW OF WALL CLAMP



GATE LATCH ADJUSTMENT INSTRUCTIONS

During shipment and installation, gate assemblies may be forced out of adjustment. If your gate does not latch automatically when pushed closed, the latch can be adjusted by following these instructions.



1. Loosen latch catch bolt (Item A, #369) just enough to be able to move latch catch (Item B, #3984) by tapping lightly.
2. Tap latch catch up or down until the latch bar (Item C, #3131) rests in the bottom of the latch catch (Item B, #3984).
3. Check to insure pendant (Item D, #3201) swings freely. If it catches on bolt (Item A, #369), then raise top hinge unit 1/4", bottom hinge may also need to be raised so it will not rub wire mesh, then repeat Step 2.
4. Tighten latch catch bolt.

KENL-DOR INSTALLATION INSTRUCTIONS WITH CABLE OPTION

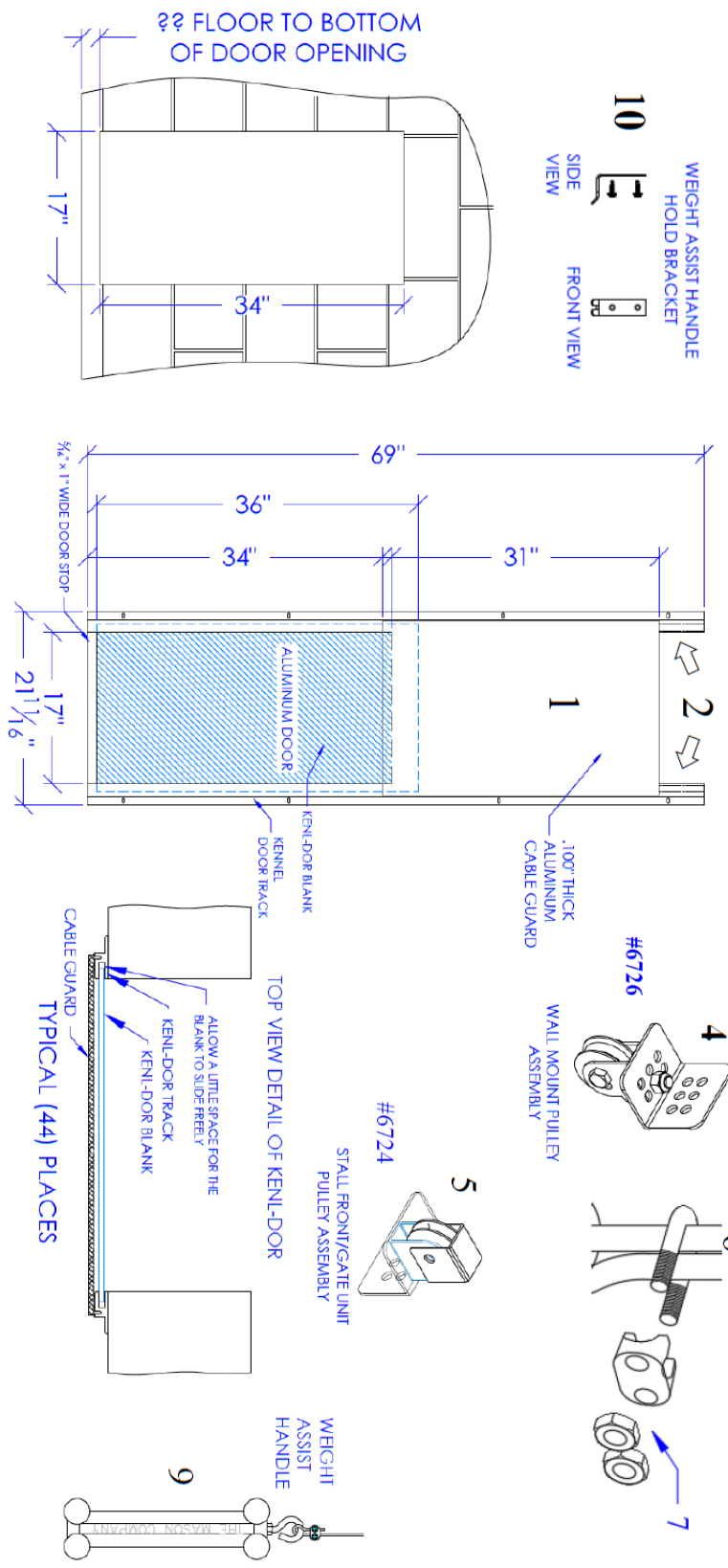
Form #1
Rev P

1. Place blank (1) between channels (2) and set in front of wall opening. Align so this assembly is centered in the opening. **DON'T** fit the door too tight. Allow 1/16" to 1/8" play between edges of door inside of channels.
2. Attach one channel at center by drilling $\frac{3}{16}$ " dia. hole $1\frac{3}{8}$ " deep in masonry wall.
3. Attach channel with $\frac{1}{4}$ " x $1\frac{1}{4}$ " tap con screws
4. For wood walls drill a $\frac{1}{8}$ " dia. pilot hole, attach with # 12 x $1\frac{1}{16}$ " sheet metal screws.
5. Align Channel vertically and attach at top and bottom.
6. Tighten screws **ONLY** enough to hold channel firm. If the screws are too tight and the wall is irregular the channel may be deformed and restrict the movement of the door. In some cases shimming may be necessary. Attach second channel in same manner.
7. Place wall mount pulley (4) in ceiling directly above the kenl-dor.
8. Place gate mount pulley (5) on gate toward the hinge side. Exact location is NOT important. Just so it is in front of the kennel.
9. Loop the wire rope (6) through the hole at the top of the kenl-dor and clamp the cable end using the cable clamp (7, #905) provided.
10. Run the cable through the rear pulley above the door and through the front pulley. Cut to proper length and attach dogbone (9) with the cable clamp (7, #905) as shown.
11. To hold door in open position simply hook the Dogbone in the Dogbone hook (10).

KENL-DOR INSTALLATION INSTRUCTIONS **WITH CABLE OPTION** (use with page 12)

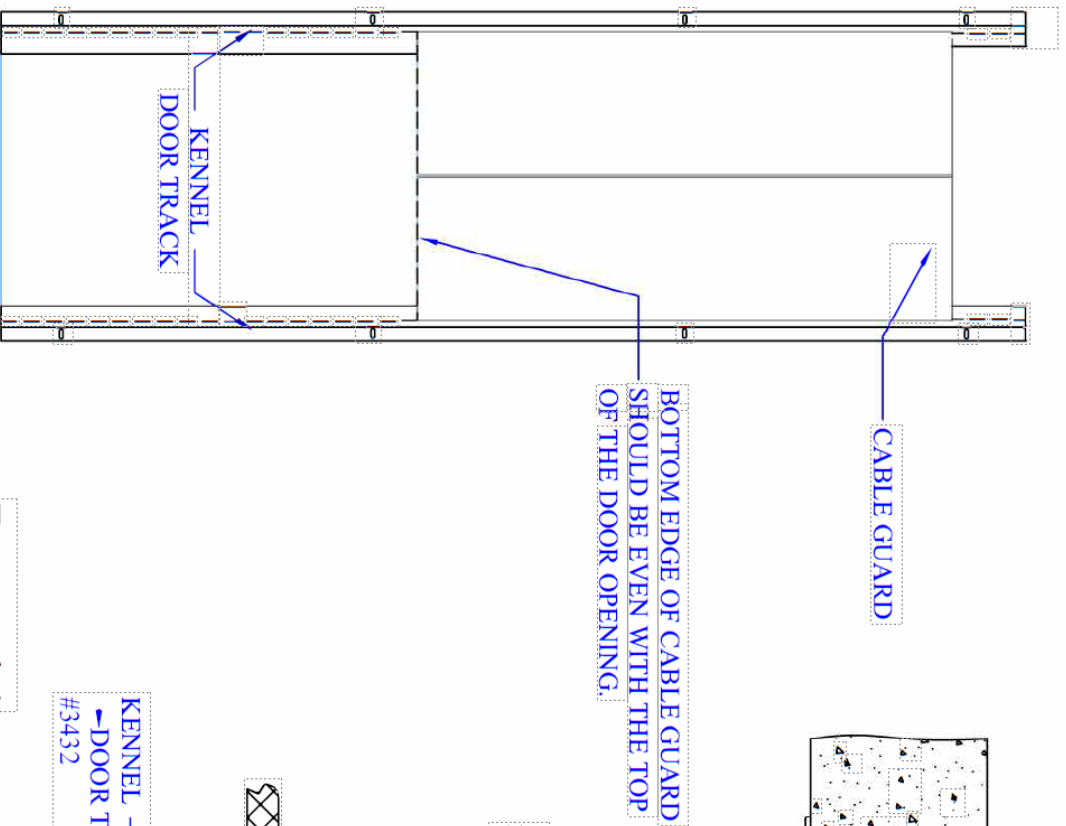
Form #1
Rev P

DETAIL OF EXTRA LARGE WALL MOUNTED KENL-DOR WITH CABLE GUARD TO FIT OPENINGS UP TO 17" X 34"
PLEASE SPECIFY DISTANCE FROM FLOOR TO BOTTOM OF DOOR

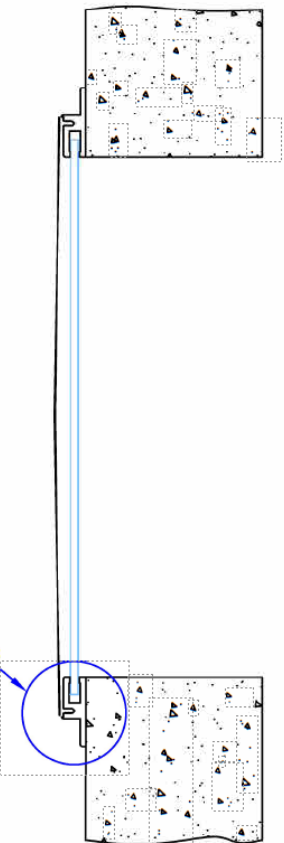


KENNEL-DOR CABLE GUARD INSTALLATION

Form #1
Rev P



ENLARGED TOP VIEW



ATTACH CABLE GUARD TO KENNEL DOOR TRACK WITH SUPPLIED PHILLIPS PAN HEAD SCREWS.

